

# Education Bureau

## School-based Support Services (SBSS) (2024/25)

Primary Level

English Language

Learning Community for  
Primary English Language Teachers:  
Integrating Curriculum Initiatives into  
the Primary English Language Curriculum

*#Values Education*

*#Reading across the Curriculum*

*#Catering for Learning Diversity*

Language Learning Support Section

L16

## Area of Support

- Building learning communities among English Language teachers

## Target of Support

- Curriculum leaders (e.g. English Panel Heads, level coordinators)
- English Language teachers

## Objectives of the Support Service

- To empower teachers to optimise their school English Language curriculum through integrating various curriculum initiatives into the curriculum
- To provide a platform for teachers to inquire into topics of common interest, both collectively and individually, share school-based experiences and resources, and network with other like-minded professionals

## Foci of Support

- To integrate various curriculum initiatives, including the major renewed emphases (MREs) in the Primary Education Curriculum Guide (PECG) (Pilot Version), into the school English Language curriculum
- To optimise the school English Language curriculum to cater for students' diverse learning needs and foster their whole-person development
- To engage participants in professional exchanges

## Theme-based workshops:

- Thematic talks, sharing and discussion
- Hands-on activities



## Inter-school networking activities:

- Inter-school lesson observation
- Inter-school visits
- Experience sharing



## Face-to-face/online meetings:

- 1-2 meetings with language support officers (e.g. consultation, collaborative lesson planning)

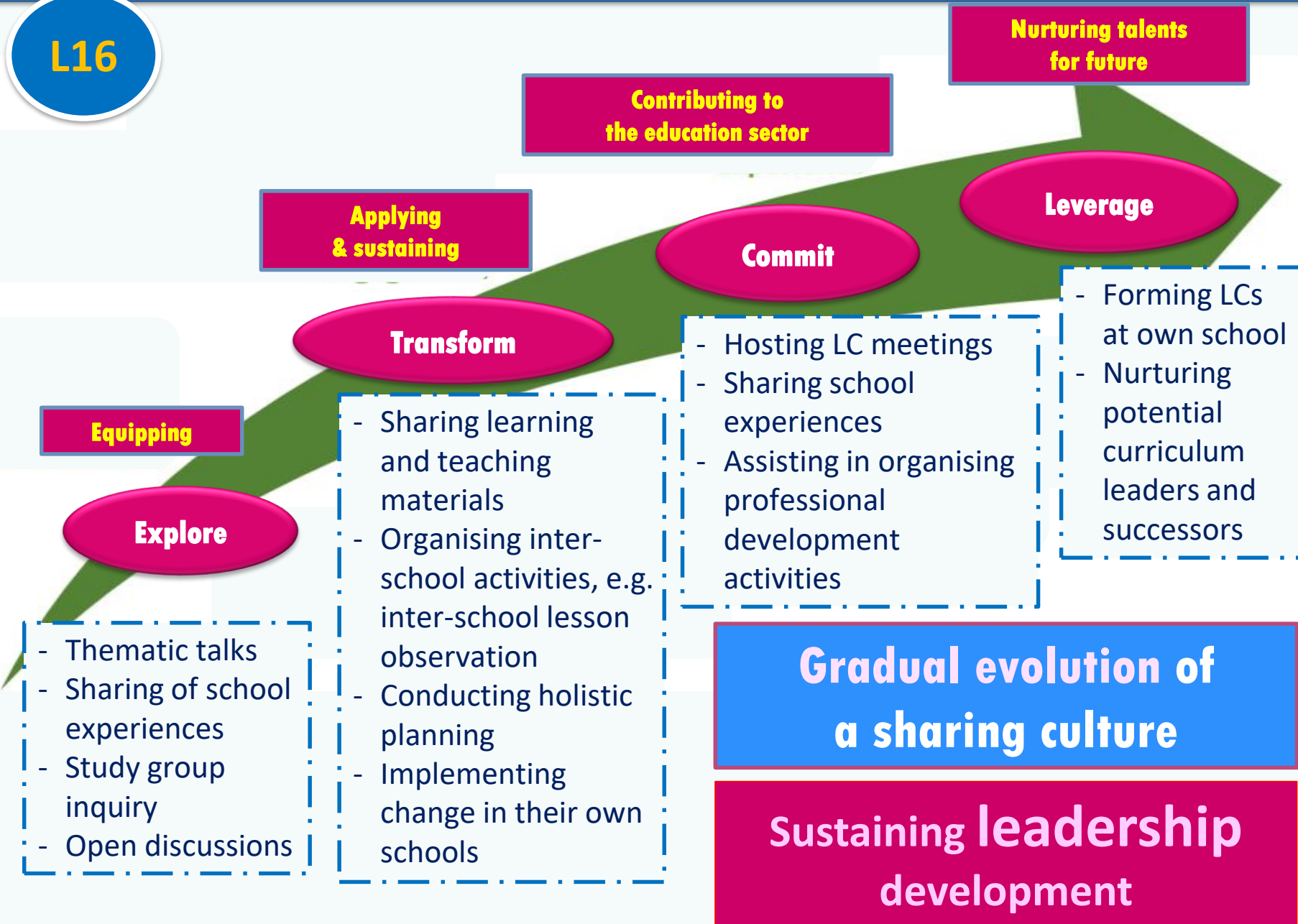
Scan the QR code to learn more about our expectations on participating schools:



<https://cd1.edb.hkedcity.net/cd/language-support/services.html>

# Four-stage learning journey for LC members

L16



Keeping abreast of a range of curriculum initiatives that **suit the school's and English panel's needs**

To address **the school's major concerns**

To set **the English panel's development focuses**

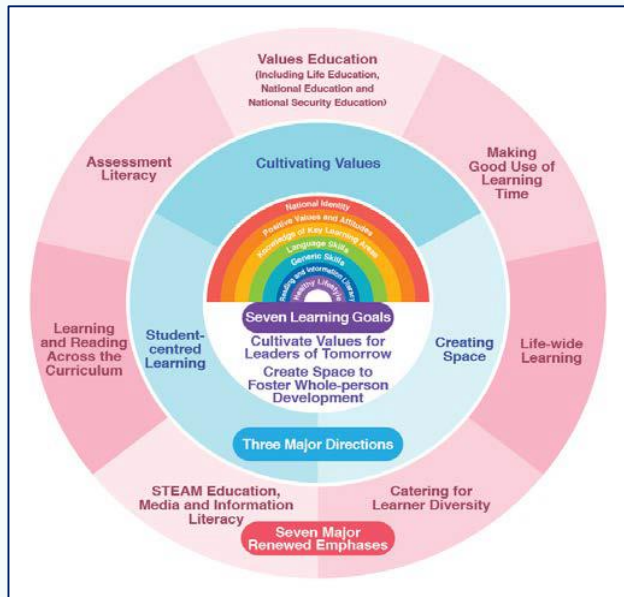
Optimising the school English Language curriculum **with reference to the PEGG (Pilot Version)**

- 7 learning goals
- 3 major directions
- 7 major renewed emphases

- 6 overarching implementation strategies (*e.g. organic integration, natural connection*)



Inquiring collectively and individually into how to **plan and implement different curriculum initiatives including the MREs**



## Examples of curriculum initiatives (that may be covered)

### *MREs in the PECG (Pilot Version)*

Self-directed learning

e-Learning

Life Planning Education

Learning/Reading across the Curriculum (including in the context of supporting STEM/STEAM education)

Values education (including life education, national education and national security education)

Making good use of learning time



**Ms Kylie Leung**

English Panel Head

CCC Chun Kwong Primary School

*“Looking back at our LC experience this year, we can sum it up with three words: feasible, sustainable and valuable. We’ve learnt a lot from the officers from the Language Learning Support Section and the teachers from other schools ... We’ve definitely enhanced our learning and teaching effectiveness.”*

*“It’s been a very fruitful experience being an LC member this school year ... We’ve applied what we’ve learnt, including theories and practical methodologies in our curriculum planning and teaching ... If I can be an LC member again, I won’t hesitate to grab the chance.”*



**Mr Carlos Li**

English Panel Head

Ping Shek Estate Catholic Primary School



Scan the QR code for an overview of all the support services provided by Language Learning Support Section (LLSS).



<https://cd1.edb.hkedcity.net/cd/languagesupport/services.html>

If you would like to know more about LLSS, please visit our website or contact us.

The screenshot shows the website header with the logo '語文教學支援組 LLSS language learning support section' and navigation links: 'Subscription to Our News', 'Home', 'Site Map', 'Contact Us'. Below the header is a menu with 'About Us', 'Our Services', 'Activity Highlights', 'School Curriculum Practices', 'Resource Teachers', and 'Publications'. The main content area features a photograph of a group of people in a meeting and a 'Bi-monthly Highlight' section with the text: 'Nurturing students' 21st century skills through integrating English into STEM education' and 'The magic of STEM: Where innovation sparks inspiration'.

<http://www.edb.gov.hk/languagesupport/>



## How to apply

**School-based support services (2024/25)**  
**Online application:** <https://clo.edb.gov.hk>



For technical support on the Online Application System, please contact the School-based Professional Support Section at 2152 3604.

**Application period:**

**22 March – 30 April 2024**

**Announcement of the allocation results:**  
**21 June 2024**

## CONTACT US

For enquiries, please contact  
**Language Learning Support Section**  
**Education Bureau**

Ms Amy Poon

Tel: 3698-4093

Email: [aypoony@edb.gov.hk](mailto:aypoony@edb.gov.hk)